

DRAWING NUMBER  
46/158

DRAWING NUMBER

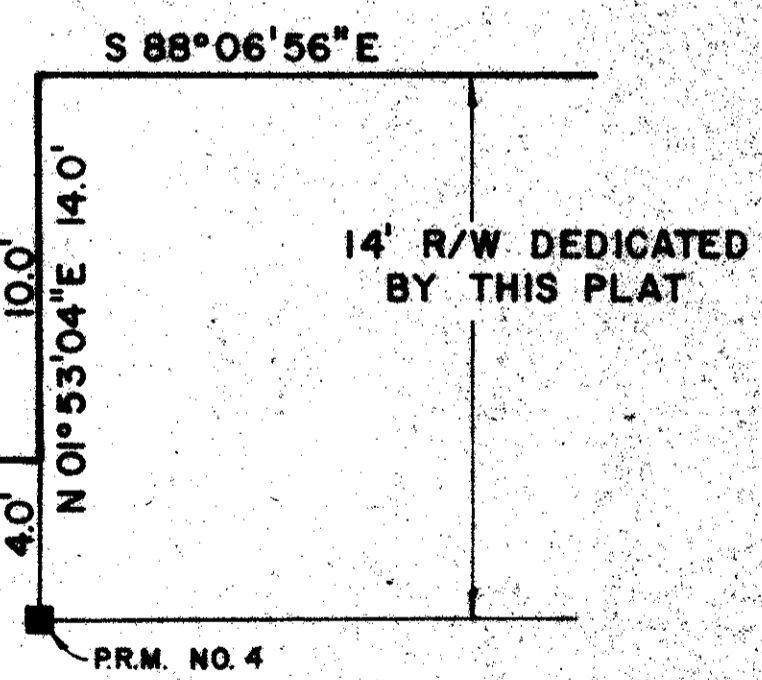
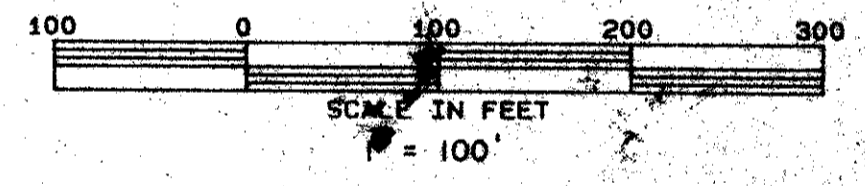
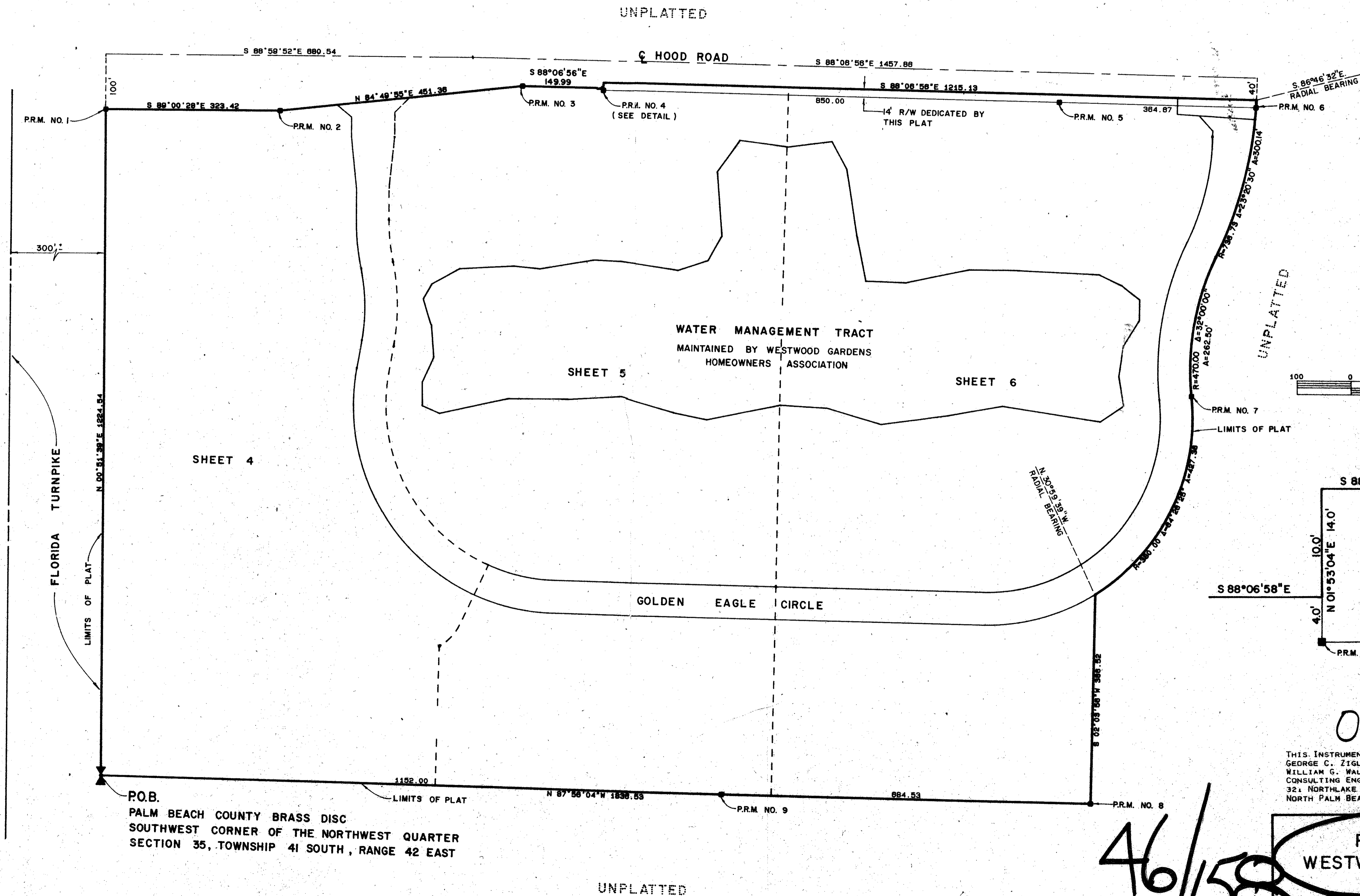
DRAWING NUMBER

DRAWING NUMBER

158

# PLAT NO. 1 WESTWOOD GARDENS (A.P.U.D.)

LYING IN SECTION 35, TOWNSHIP 41 SOUTH, RANGE 42 EAST  
PALM BEACH COUNTY, FLORIDA  
SHEET 3 OF 6  
AUGUST 1983



DETAIL  
SCALE: 1" = 5'

0379-001

THIS INSTRUMENT PREPARED BY:  
GEORGE C. ZIGLIANI  
WILLIAM G. WALLACE, INC.  
CONSULTING ENGINEERS AND LAND SURVEYORS  
321 NORTHLAKE BOULEVARD  
NORTH PALM BEACH, FLORIDA 33408

P.O.B.  
PALM BEACH COUNTY BRASS DISC  
SOUTHWEST CORNER OF THE NORTHWEST QUARTER  
SECTION 35, TOWNSHIP 41 SOUTH, RANGE 42 EAST

PLAT NO. 1  
WESTWOOD GARDENS  
(A.P.U.D.)

**WILLIAM G. WALLACE, INC.**  
CONSULTING ENGINEERS, LAND PLANNERS & SURVEYORS  
321 NORTHLAKE BLVD., NO. PALM BEACH, FL. 33408 - 336-6102-0233  
3241 SW MAPLE RD., PALM CITY PLAZA, PALM CITY, FL. 32909 - 336-988-0200

FIELD:	JOB NO. 82-758	F.B. PG.
OFFICE: R.M.R.	DATE: AUGUST 1983	DWG. NO. 82-758
CK'D: ZIGLIANI	REP:	SHEET 3 OF 6

46/158

PLAN HOLD CORPORATION • IRVINE, CALIFORNIA  
REGISTERED PROFESSIONAL SURVEYORS  
REGISTERED NUMBER 0748